



tobiano

161 Rue Cheval Noir

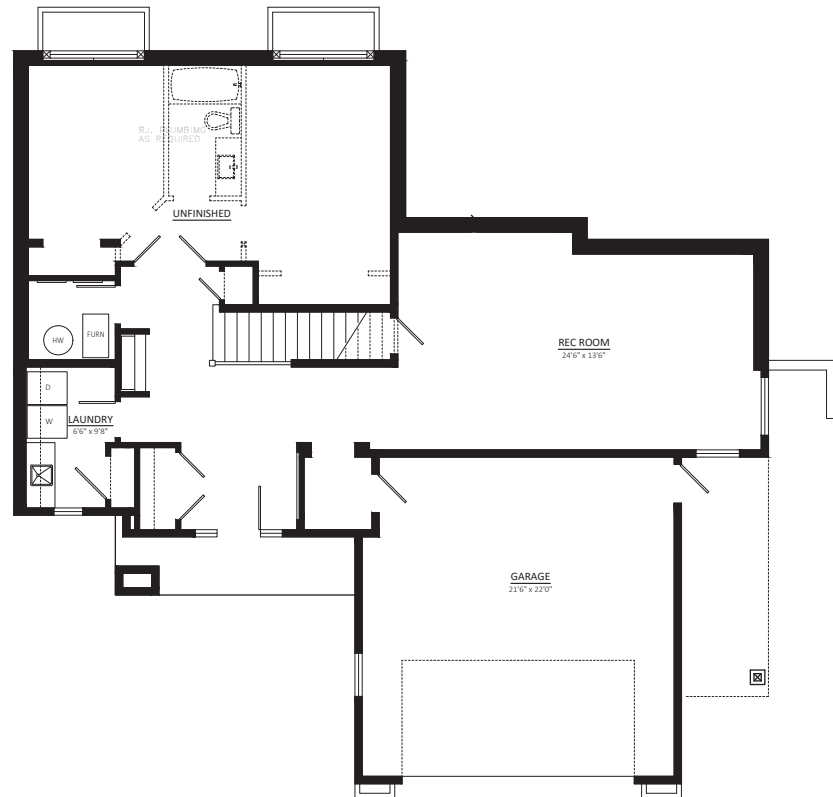


MAIN:
1558 SQ. FT. MAIN FLOOR
(EXCLUDING STAIRS & UTILITY/STORAGE)



PARTIALLY FINISHED BASEMENT:
460 SQ. FT. UNFINISHED BASEMENT
(EXCLUDING GARAGE)

817 SQ. FT. FINISHED BASEMENT
(INCLUDING STAIRS/EXCLUDING GARAGE)



*E. & O.E. The Builder reserves the right to make substitutions or adjustments as needed.

**QUESTIONS?
CONTACT US!**



TREVOR E FINCH
Personal Real Estate Corporation

trevor@finchgroup.ca
778-765-4384



JESTINE HINCH
Personal Real Estate Corporation

jestinehinch@remax.net
778-765-4384



ReMax Kamloops
2503745331