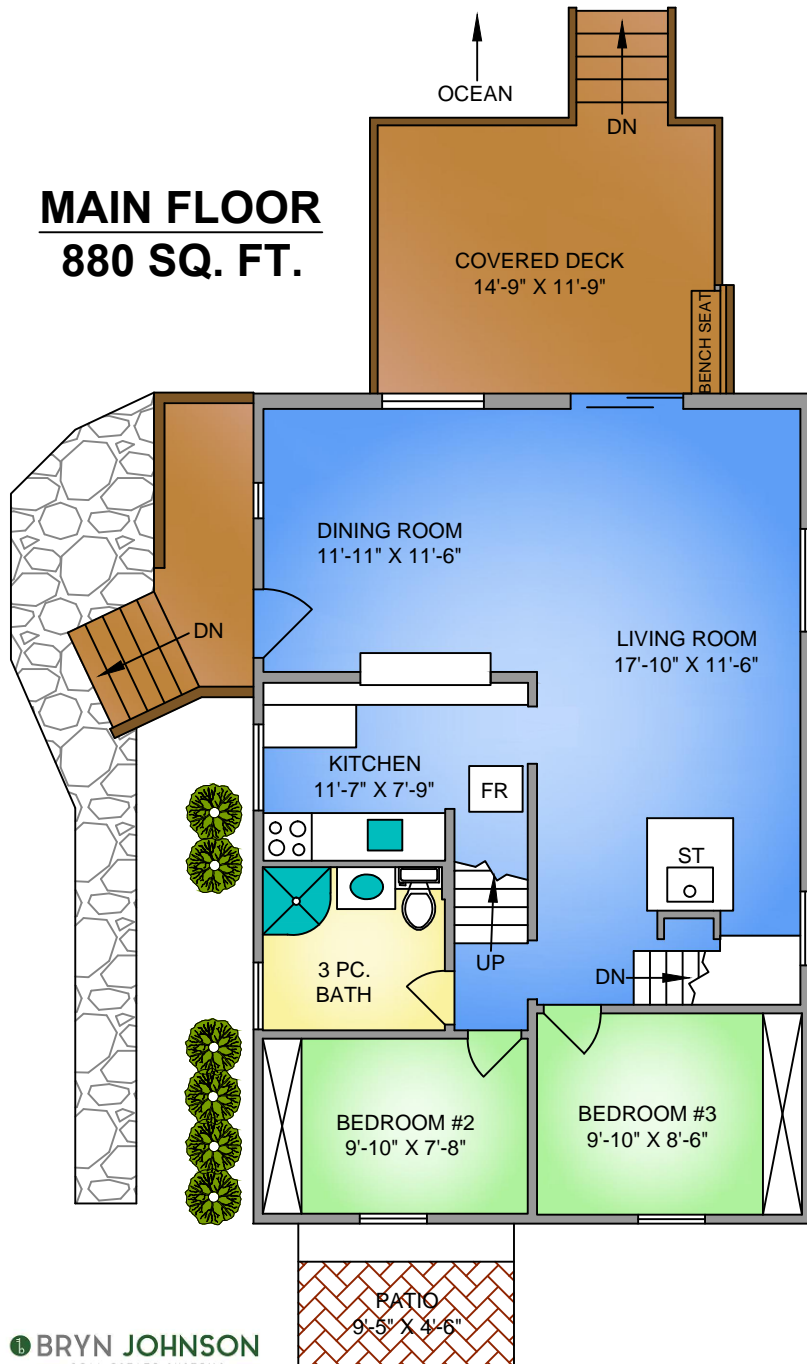
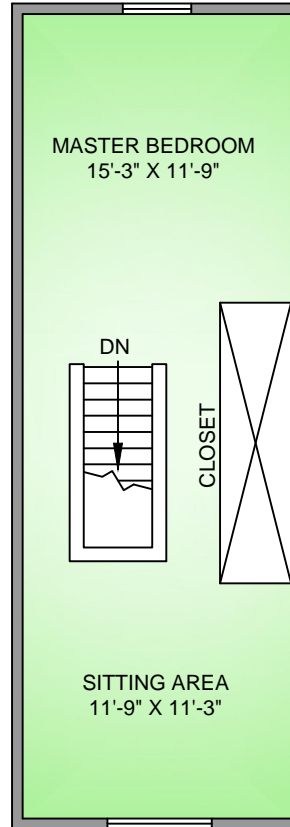


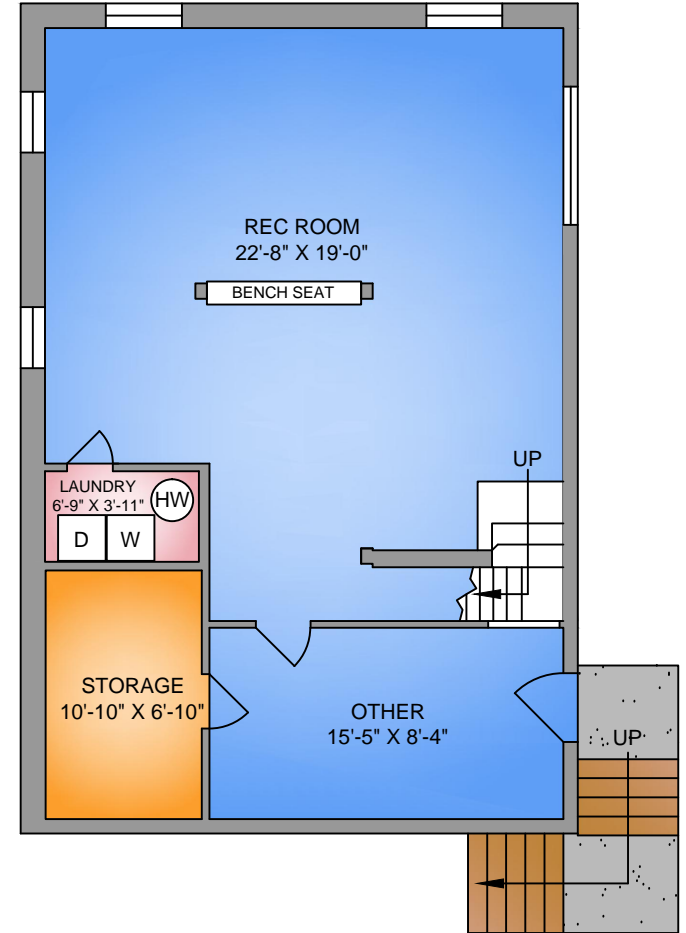
**MAIN FLOOR**  
**880 SQ. FT.**



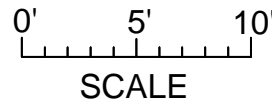
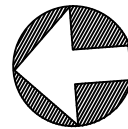
**UPPER FLOOR**  
**445 SQ. FT.**  
**7'-0" CEILING**



**PARTLY FINISHED**  
**LOWER FLOOR**  
**880 SQ. FT.**  
**7'-4" CEILING**



NORTH



220 CAPTAIN MORGANS BOULEVARD  
MAY 7, 2019

Prepared by PROPER MEASURE MID ISLAND for the exclusive use of BRYN JOHNSON  
Plans may not be 100% accurate. Buyer must verify any critical measurement.  
Private resale or modification of floor plans to a third party by any individual or entity other than Proper Measure  
Mid Island is strictly prohibited

FLOOR	AREA (SQ. FT.)	
	FINISHED	DECK / PATIO
MAIN	880	220
UPPER	445	-
LOWER (PARTLY FINISHED)	880	-
<b>TOTAL</b>	<b>2215</b>	<b>220</b>